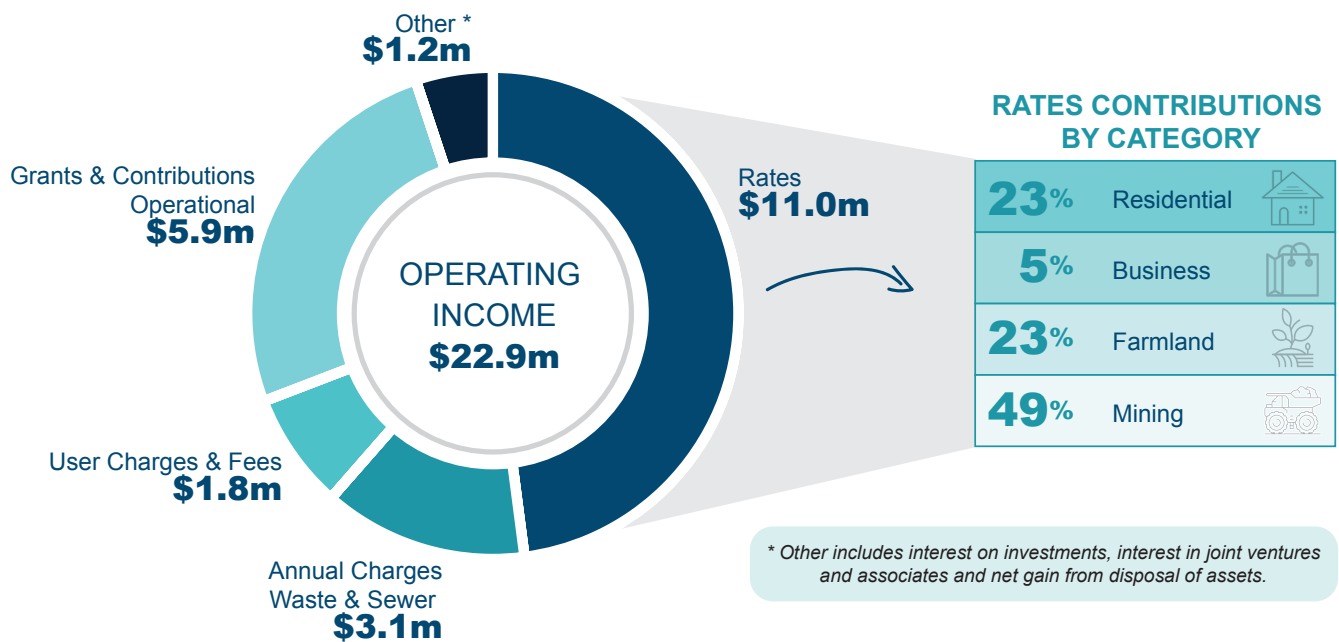


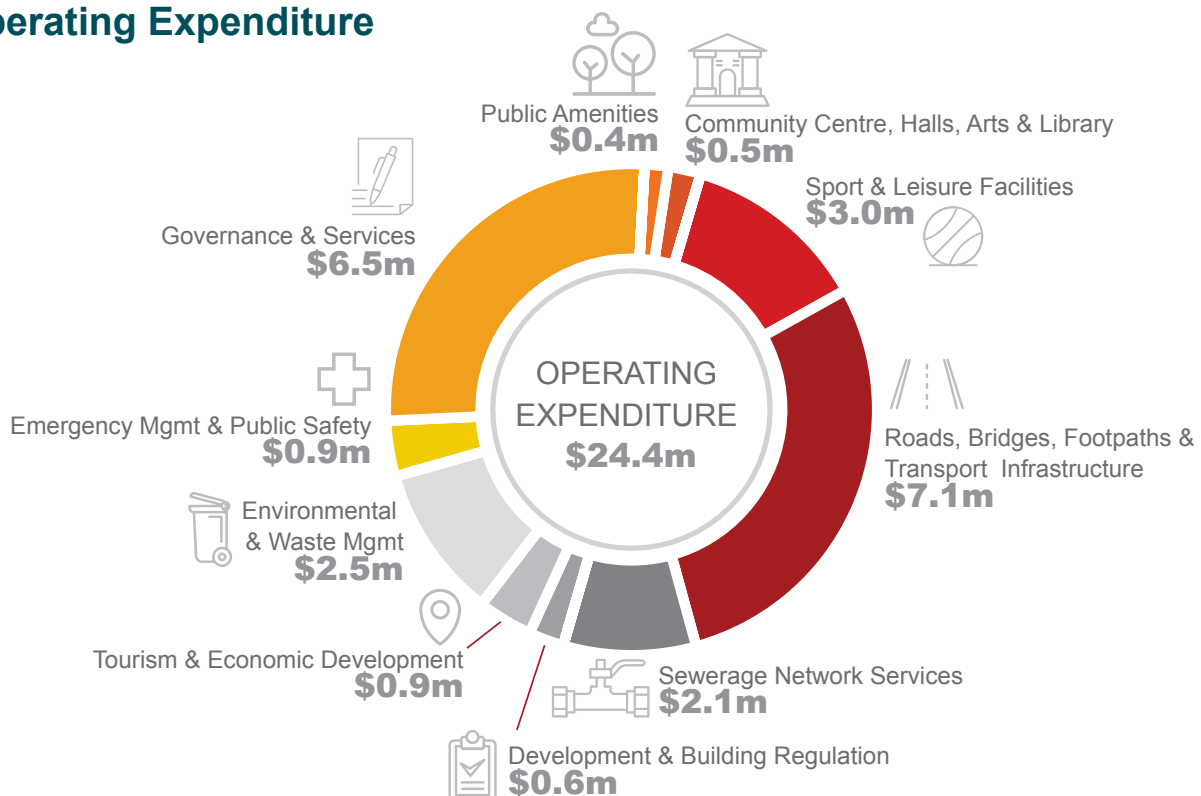
2024/25 Operational Plan Snapshot

The Operational Plan sets out Blayney Shire Council's objectives for the coming year, and the resources and activities required to achieve our goals. This summary provides a snapshot of projected; income, operational and capital expenditure, and key projects for the next financial year.

Operating Income

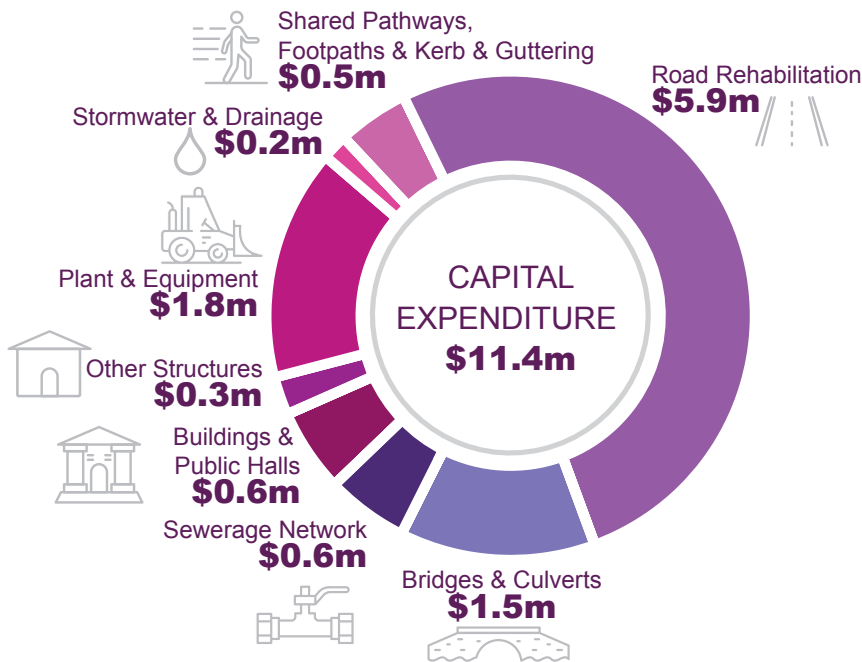


Operating Expenditure



2024/25 Operational Plan Snapshot

Capital Expenditure Program



CAPITAL EXPENDITURE FUNDING SOURCES

General Council Revenue	\$2.5m
Special Variation to Rates	\$0.7m
Grants & Contributions (below)	\$6.4m
Resources for Regions Round 9	\$3.8m
Stronger Country Communities Round 5	\$0.3m
Local Roads & Community Infrastructure	\$0.8m
Fixing Local Bridges	\$1.0m
Other	\$1.8m
Council Cash Reserves	\$1.8m


\$9 million (73% of capital expenditure) will be spent on stormwater and drainage, footpaths, bridges and culverts, and road rehabilitation in 2024/25.

Project Highlights


ROADS

	Browns Creek Road	\$0.6m
	Richards Lane	\$1.2m
	Forest Reefs Road	\$0.3m
	Hobbys Yards Road	\$2.0m

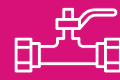
BRIDGES, CULVERTS & STORMWATER

	Newbridge Road Culvert	\$0.2m
	Coombing Street Crossing	\$1.0m


OTHER STRUCTURES

	Blayney Rotary Lookout	\$0.2m
---	------------------------	--------

SEWER NETWORK

	Replacement/ Lining Sewer Mains	\$0.5m
---	---------------------------------	--------

FOOTPATHS & SHARED PATHWAYS

	Heritage Pavement for Millthorpe Village – Victoria Street – Montgomery St	\$0.3m
---	--	--------

Read more on the Current Projects section of the Council website which includes the funding sources, project scope and timelines for the above works.