

4.1 Overall Strategy

STRATEGIC THEME:	KEY OBJECTIVE:	STRATEGIC ACTION:
1 CHARACTER & HERITAGE	To maintain the 'Village feel' with its quirky character and heritage charm	<ul style="list-style-type: none"> Restoration of the original features of the streetscape; such as the verandahs on buildings, cobblestone sections of the streets & bluestone kerb and guttering Relocate the existing power network underground along Pym St Additional heritage style footpath seating Upgrade Millthorpe bluestone gutters. Undertake audit of condition: identify gaps, remove cement sections, repoint, replace & refurbish blue stone guttering of within the Village Centre
2 PEDESTRIAN SAFETY	To slow traffic and create a sense of pedestrian ownership on the streets of the Village Centre	<ul style="list-style-type: none"> Introduction of a 30km/hr High Pedestrian Activity Area (HPAA) Improve line marking to clearly identify traffic lanes Traffic calming devices in Victoria Street at HPAA thresholds Improved/advanced warning lights at the school crossing in Park Street Heavy vehicles and through traffic diverted via Glenorie Road Upgraded intersections with planted corners, tree blisters and accessible road crossing points
3 ACCESSIBILITY & WAYFINDING	To promote the connectivity of the Village for less able people & holiday visitors to park and walk	<ul style="list-style-type: none"> 'Park and Walk' signage to promote and connect the available parking at the Bowling Club, Railway Station and Redmond Oval Clear signage to promote where caravans and trailers can park Clear signage to public toilets at Redmond Oval and the Railway Station Install reverse angle parking on Victoria Street between Park and Pym Street Improve walkways, footpath surfaces and install new pram ramps
4 FUNCTION & WORKABILITY	To support the working nature of the Village	<ul style="list-style-type: none"> Seal the Railway Station car park Install 1x dual port (destination charger) charging point at Station Place Maintain clear zones and vehicle access for parking, deliveries and times of emergency in the Village Centre Rollover roundabout to guide traffic flow from Park St (Subject to Transport for NSW)
5 COMMUNITY VALUE	To value the street as open space infrastructure supporting social interaction, sense of identity and business	<ul style="list-style-type: none"> Install temporary bollard system to support temporary closure of Pym St for community festivals, markets and other special events Trial 'Parklet' concept to Station Place (sensitive to Millthorpe Heritage style theme) to provide summer outdoor dining and seating Station Place to become a shared zone

4.2 Overall Strategy / Masterplan Concept

1. CHARACTER & HERITAGE

- 1.1 Restoration of the original features of the streetscape; such as the verandahs on buildings, cobblestone sections of the streets & bluestone kerb and guttering
- 1.2 Upgrade Millthorpe bluestone gutters. Undertake audit of condition: identify gaps, remove cement sections, repoint, replace & refurbish blue stone guttering within Village Centre.

2. PEDESTRIAN SAFETY

- 2.1 Introduction of a 30km/hr High Pedestrian Activity Area (HPAA)
- 2.2 Improved/advanced warning lights at the school crossing in Park Street
- 2.3 Heavy vehicles and through traffic diverted via Glenorie Road
- 2.4 Upgraded intersections with planted corners, tree blisters and accessible road crossing points

3. ACCESSIBILITY & WAYFINDING

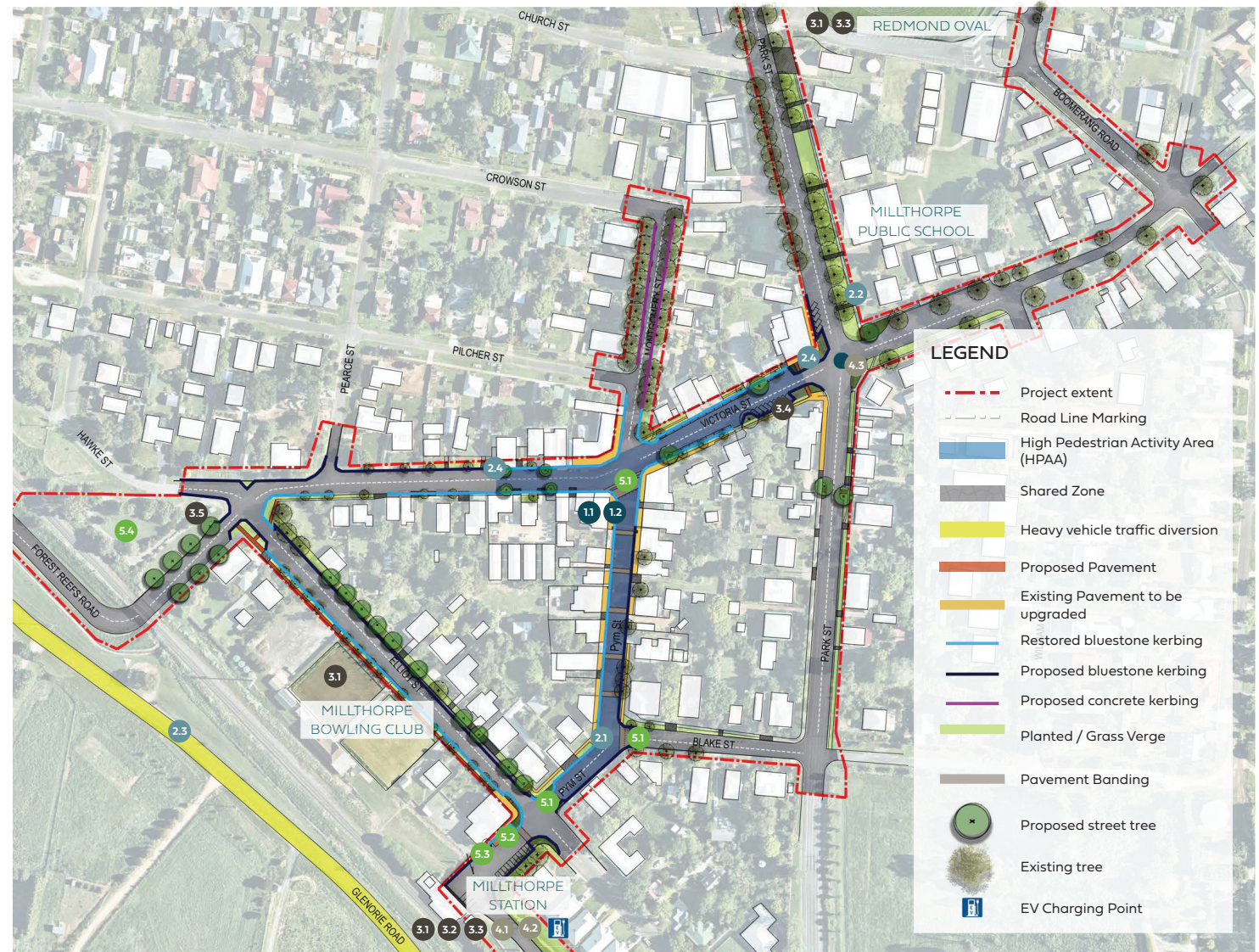
- 3.1 'Park and Walk' signage to promote and connect the available parking at the Bowling Club, Railway Station and Redmond Oval
- 3.2 Clear signage to promote where caravans and trailers can park
- 3.3 Clear signage to public toilets at Redmond Oval and the Railway Station
- 3.4 Installing reverse angle parking on Victoria Street between Park and Pym Street
- 3.5 Removal / relocation of existing bus shelter

4. FUNCTION & WORKABILITY

- 4.1 Seal the Railway Station car park
- 4.2 Install 1 Dual Port (destination charger) charging point at Station Place
- 4.3 Rollover roundabout to guide traffic flow (subject to Transport for NSW to review)

5. COMMUNITY VALUE

- 5.1 Install temporary bollard system to support temporary closure of Pym St for community festivals, markets and other special events
- 5.2 Trial 'Parklet' concept to Station Place (sensitive to Millthorpe Heritage style theme) to provide summer outdoor dining and seating
- 5.3 Station Place to become a shared zone
- 5.4 Improve visual connection and access to Mill Green Park



4.3 Village Centre Concept / Plan

1. CHARACTER & HERITAGE

- 1.1 Restoration of the original features of the streetscape; such as the verandahs on buildings, cobblestone sections of the streets & bluestone kerb and guttering
- 1.2 Additional heritage style footpath seating
- 1.3 Relocate the existing power network underground
- 1.4 Upgrade Millthorpe Blue Stone Gutters. Undertake audit of condition: identify gaps, remove cement sections, repoint, replace & refurbish blue stone guttering of Station Place, Pym, Victoria, Blake and Elliott Streets.
- 1.5 Paving banding sympathetic to heritage style

2. PEDESTRIAN SAFETY

- 2.1 Introduction of a 30km/hr High Pedestrian Activity Area (HPAA)
- 2.2 Improve line marking to clearly identify traffic lanes
- 2.3 Traffic calming devices at HPAA thresholds
- 2.4 Upgraded intersections with planted corners, tree blisters and accessible road crossing points

3. ACCESSIBILITY & WAYFINDING

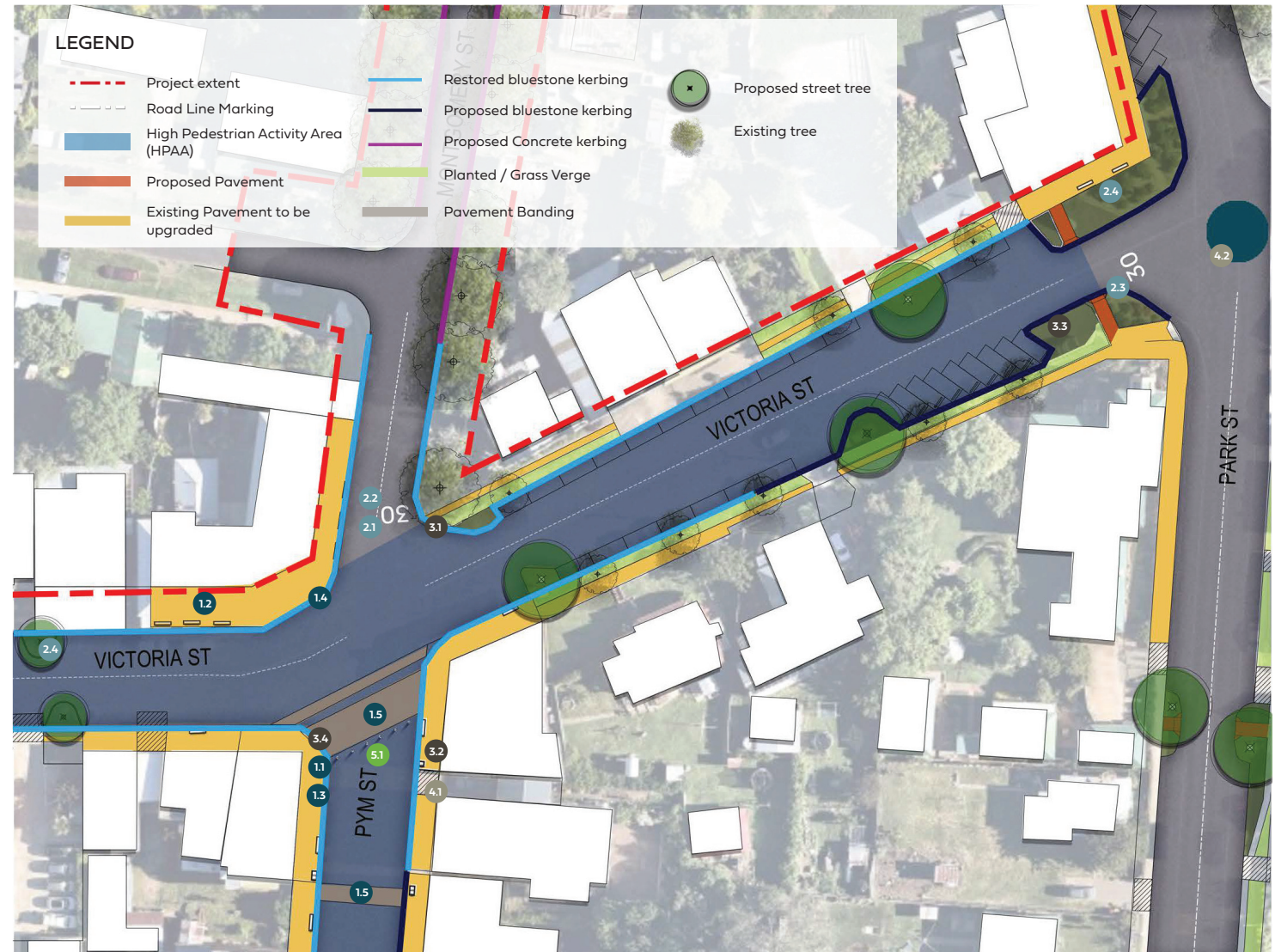
- 3.1 Improve walkways, footpath surfaces and install new pram ramps
- 3.2 Upgraded heritage interpretation + wayfinding signage
- 3.3 Installing reverse angle parking on Victoria Street between Park + Pym St (TBC with Traffic Consultant)
- 3.4 Raised threshold for more level access across deep kerbs

4. FUNCTION & WORKABILITY

- 4.1 Maintaining clearzones and vehicle access for parking, deliveries and times of emergency in the Village Centre
- 4.2 Rollover roundabout to guide traffic flow (subject to Transport for NSW to review)

5. COMMUNITY VALUE

- 5.1 Install temporary bollard system to support temporary closure of Pym St for community festivals, markets and other special events



4.4 Station Place Concept / Plan

1. CHARACTER & HERITAGE

- 1.1 Upgrade Millthorpe bluestone gutters. Undertake audit of condition: identify gaps, remove cement sections, repoint, replace & refurbish blue stone guttering of Station Place, Pym, Victoria, Blake and Elliott Streets.

2. PEDESTRIAN SAFETY

- 2.1 Introduction of a 30km/hr High Pedestrian Activity Area (HPAA)
- 2.2 Improve line marking to clearly identify traffic lanes
- 2.3 Traffic calming devices at HPAA thresholds
- 2.4 Upgraded intersections with planted corners, tree blisters and accessible road crossing points

3. ACCESSIBILITY & WAYFINDING

- 3.1 Improve walkways, footpath surfaces and install new pram ramps
- 3.2 'Park and Walk' signage to promote and connect the available parking at the Bowling Club, Railway Station and Redmound Oval
- 3.3 Clear signage to public toilets at the Railway Station

4. FUNCTION & WORKABILITY

- 4.1 Sealing the Railway Station car park
- 4.2 Refurbish second toilet block at railway station
- 4.3 Install 1 Dual Port (destination charger) charging point at Station Place

5. COMMUNITY VALUE

- 5.1 Install temporary bollard system to support temporary closure of Pym St for community festivals, markets and other special events
- 5.2 Trial 'Parklet' concept to Station Place (sensitive to Millthorpe Heritage style theme) to provide summer outdoor dining and seating
- 5.3 Station Place to become a shared zone

