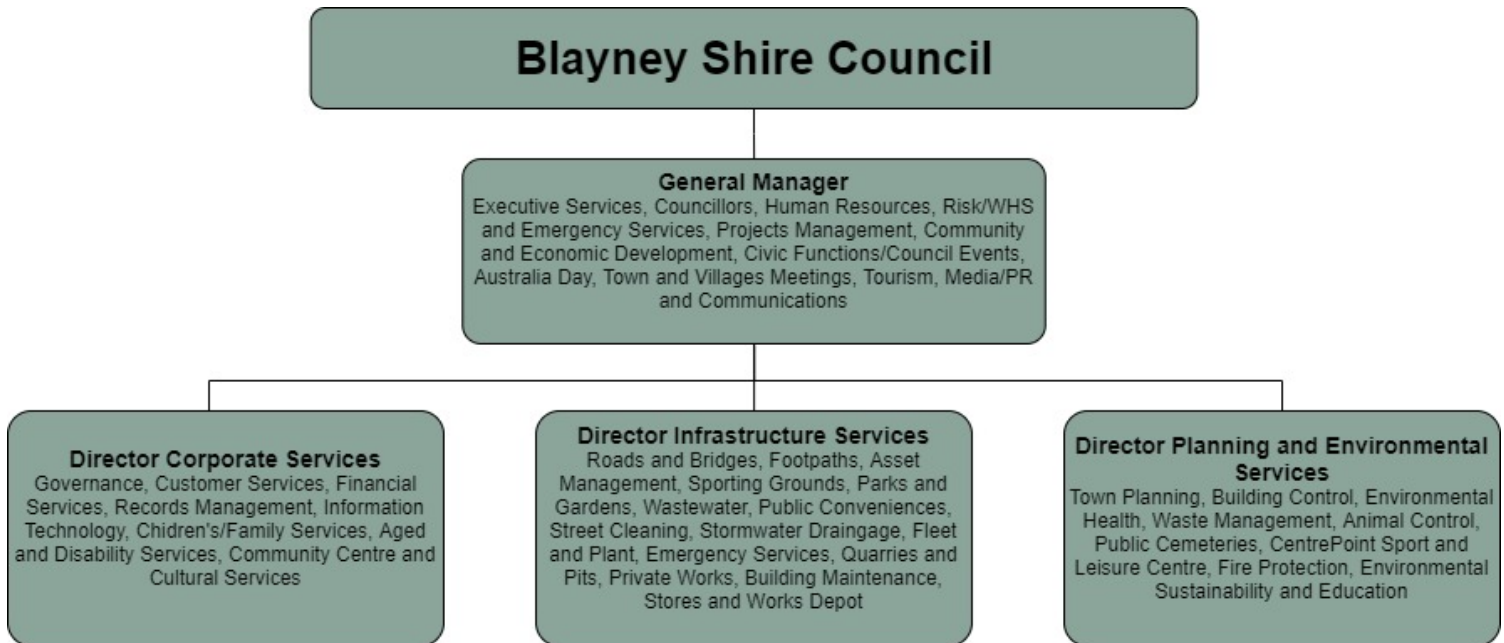




Organisational Structure

Blayney Shire Council's internal structure is divided between four Divisions: Executive Services, Corporate Services, Infrastructure Services and Planning & Environmental Services. Council employs approximately 98 staff located at its Administration Centre, Council's depot and CentrePoint Sport & Leisure.



Last modified: 06 Sep 2022

- [Contacts](#)
- [Council Meetings](#)
- [Council Information](#)
 - [Access to Council Information](#)
 - [Applications and Forms](#)
 - [Council Policies](#)
 - [Current Projects](#)
 - [Fees and Charges](#)
 - [Key Dates](#)
 - [Plans and Strategies](#)
 - [Organisational Structure](#)
 - [Role of Local Government](#)
- [Working with Council](#)
- [Your Say](#)